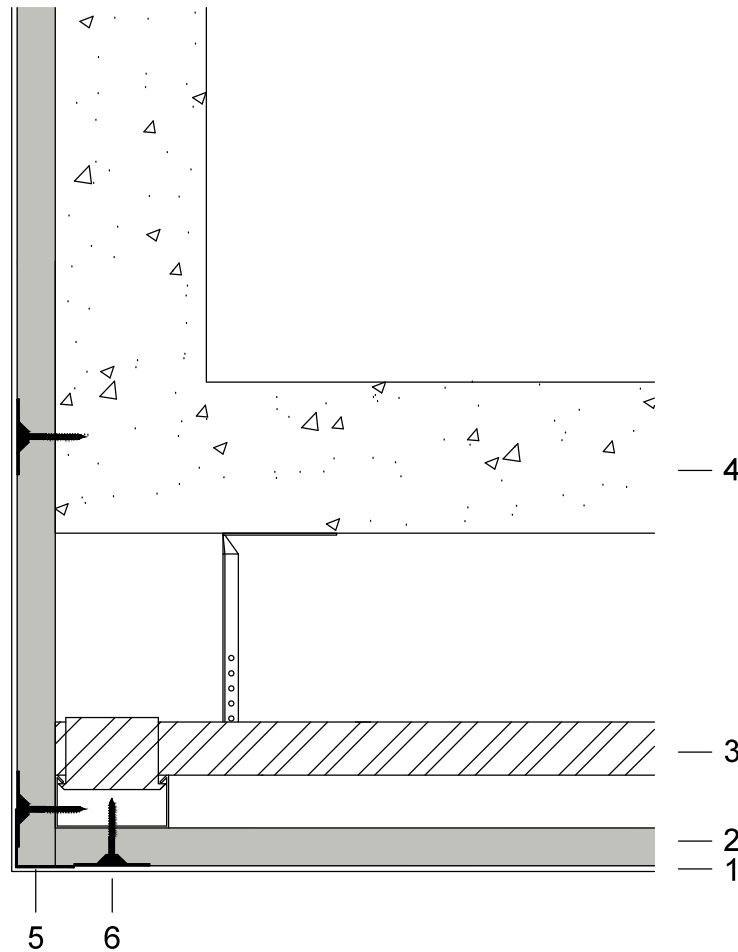


TYPE E - Suspended installation, "direct to grid"

*External corner

1. fade® acoustic plaster
2. Acoustic board
3. Suspended grid system
4. Existing ceiling
5. PVC corner profile
6. Special steel washer



INFORMATION ABOUT THIS DRAWING

We kindly remind you that this is a general guide on how the system is set up and specific technical advise is recommended before proceeding with any transaction. Full technical information available from your local fade® approved installer or from fade® Acoustic Ceilings EUROPE. Please note the fade® acoustic plaster system can only be installed by fade® approved installers.

DATE

10 - 2017

DRAWING NAME

fade®Acoustic_E.g.20-11

CONTACT INFORMATION

Kasper Ehlert
info@fadeceilings.com

fade®