

fade® acoustic plaster

CASE STUDY: residential house, *denmark*

ARCHITECT: Black Architecture | LOCATION: Vedbaek, Denmark | COMMENT: 400m2 plus+

The residential house located in Vedbaek, Denmark. Designed by Black Architecture and done in 2018.

fade® supplied our standard white and ultra smooth acoustic plaster in order to match the "New Nordic" Scandinavian elegant design guidance set out by the architect.

The materials used in the luxurious private home all had hard surfaces that reflects sound. The architect turned to our flexible acoustic plaster system to suit design requirements and to control reverberation.

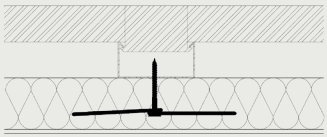
The result is around 400m2 fade® acoustic plaster with finishes done in fade® Acoustic Plaster *plus+* for an ultra smooth finish.



residential house, *denmark*

INSTALLATION METHOD

* Type A - Direct-to-grid installation:



25mm (1") acoustic boards have been installed direct-to-grid fixed with fade® Special Wahers.

fade® Acoustic Plaster *plus+* has been spray applied in two layers to a total thickness of 3mm (1/8").

PROJECT | TECHNICAL DATA



Plus+ Luminous Reflectance
Factor: CIELAB L 93%



Plus+ color:
NCS S 0500-N



A2-s1,d0 as per EN 13501
2007+A1:2009



NRC for the Type A (A Mount),
25mm (1") direct-to-grid
system:.

25mm (1") fade® PLUS+ - Direct - Type A (A Mount)

