

fade[®] acoustic plaster

CASE STUDY: eu chemicals agency, finland

ARCHITECT: L Architects | LOCATION: Helsinki, Finland | COMMENT: 2,000m² albus

ECHA is an agency of the European Union, which provides technical, scientific and administrative support in fulfilling the requirements of EU regulation.

The side of the building is part of the old shipyard area. The redevelopment of the old shipyard area is based on the winning entry of the architecture competition back in 2010/2011, won by the Danish firm Lundgaard & Tranberg Arkitekter. The principal architect of the building was Robert Trapp from L Architects.

The monumental nine-story buildings principal elevation material is corten steel, and it adjusts well with the redbrick workshop buildings of the shipyard area.

The office floors are organized around the main foyer, which extends from the ground floor to the top floor. This environments requires the best acoustic control with fade[®] Acoustic Plaster.

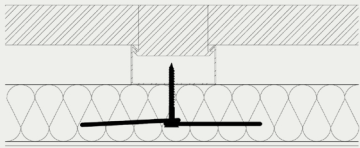
See the dark grey windows on the brick wall? - Well, that is not windows, that is colored fade[®] Acoustic Plaster.



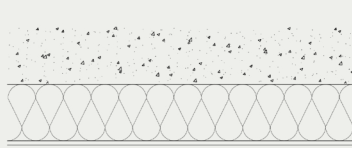
european chemicals agency, *finland*

INSTALLATION METHOD

* Type E - Direct-to-grid installation:



* Type A - Direct installation:



40mm (1 1/2") acoustic boards have been installed direct-to-grid with fade® Special Washers & direct installation fixed with adhesive.

fade® Acoustic Plaster *albus* has been spray applied in two layers to a total thickness of 3mm (1/8").

PROJECT | TECHNICAL DATA



Albus Reflectance Factor:
80%



Albus color:
NCS S 0300-N &
NCS S 8000-N



A2-s1,d0 as per EN 13501
2007+A1:2009



NRC for the Type A (A Mount),
40mm (1 1/2") direct-to-grid
system.

40mm (1 1/2") fade® PLUS+ - Direct - Type A (A Mount)

Absorption class	A
α_w	0.90
NRC	0.90

